



## 19 Whitehill Park, Gateshead, NE10 9BN

Offers Over £169,950

Nestled in the charming area of Whitehill Park, Gateshead, this delightful two-bedroom mid-terraced house offers a perfect blend of comfort and convenience. Upon entering, you are welcomed by a spacious hallway that leads into a bright living room, complete with a built-in storage cupboard and an open access to the dining kitchen, creating an inviting space for both relaxation and entertaining. The fully equipped kitchen is a chef's dream, featuring a double oven, fridge/freezer, dishwasher, and washing machine, ensuring that all your culinary needs are met. The ground floor also boasts a convenient w/c and utility area, adding to the practicality of the home. Upstairs, you will find two generously sized double bedrooms, one of which features a charming Juliet balcony, perfect for enjoying the fresh air and views. The family bathroom is well-appointed, providing a comfortable space for your daily routines. Outside, the property benefits from a garden to the rear, offering a lovely outdoor space for gardening or simply unwinding. A driveway at the front provides off-street parking, adding to the convenience of this lovely home. This property is a true gem, and viewing is highly recommended to fully appreciate the spacious accommodation and delightful features it has to offer. Whether you are a first-time buyer or looking to downsize, this home in Whitehill Park is sure to meet your needs.

## ENTRANCE HALLWAY

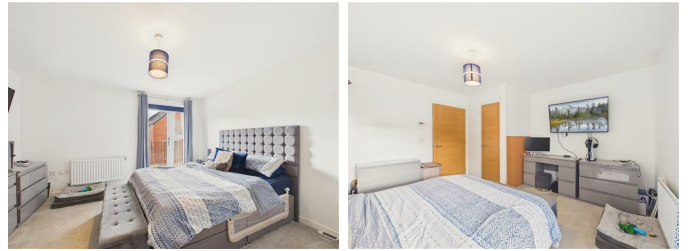


## FIRST FLOOR LANDING



## BEDROOM ONE

13'5" x 12'7" (4.11m x 3.86m)



## LIVING ROOM

16'9" x 9'10" (5.11m x 3.00m)



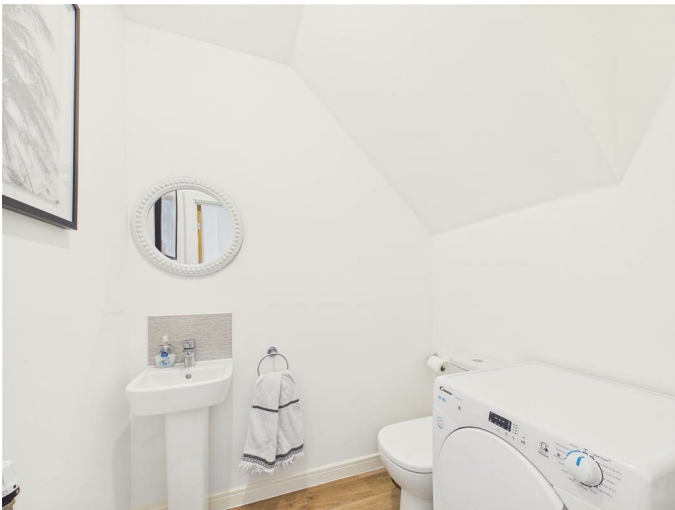
## BEDROOM TWO

13'2" x 8'0" (4.02m x 2.46m)



## GROUND FLOOR W/C/UTILITY

5'11" x 5'5" (1.81m x 1.66m)



## FAMILY BATHROOM

7'4" x 6'3" (2.26m x 1.92m)

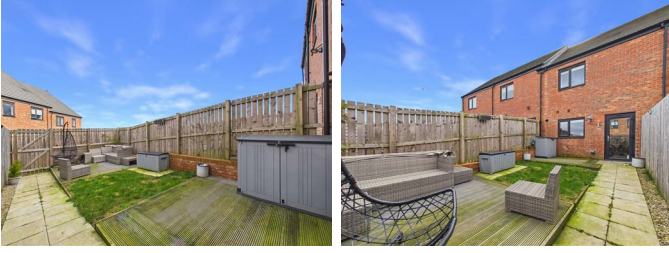


## DINING KITCHEN

13'2" x 12'2" (4.03m x 3.71m)



## EXTERNAL



## DRIVEWAY

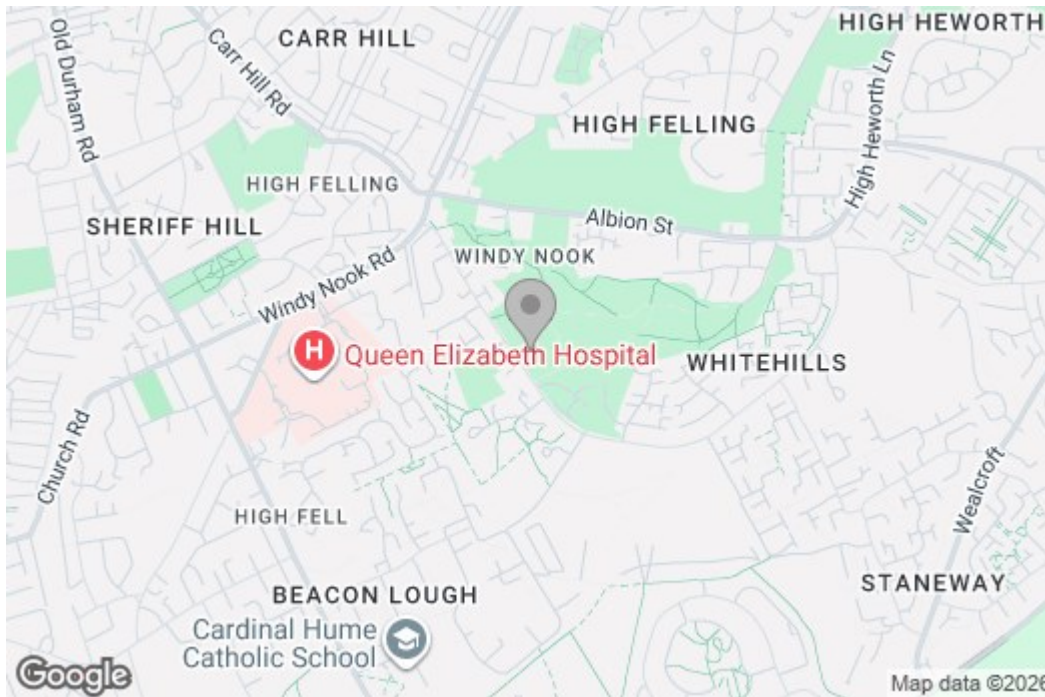
### Property disclaimer

**IMPORTANT NOTE TO PURCHASERS:** We endeavour to make our sales particulars accurate and reliable, however, they do not constitute or form part of an offer or any contract and none is to be relied upon as statements of representation or fact. The services, systems and appliances listed in this specification have not been tested by us and no guarantee as to their operating ability or efficiency is given. All measurements have been taken as a guide to prospective buyers only, and are not precise. Floor plans where included are not to scale and accuracy is not guaranteed. If you require clarification or further information on any points, please contact us, especially if you are travelling some distance to view. Fixtures and fittings other than those mentioned are to be agreed with the seller. We cannot also confirm at this stage of marketing the tenure of this house.

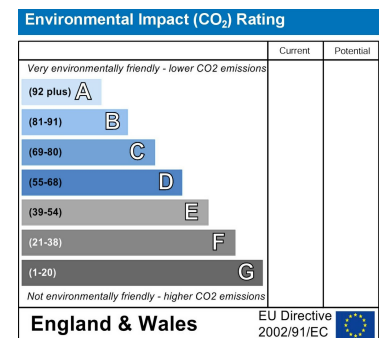
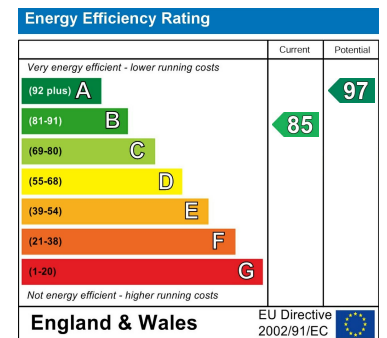
# Floor Plan



# Area Map



# Energy Efficiency Graph



These particulars, whilst believed to be accurate are set out as a general outline only for guidance and do not constitute any part of an offer or contract, purchaser should not rely on them as statements of representation of fact, but must satisfy themselves by inspection or otherwise as to their accuracy. No person in this firm's employment has the authority to make or give an representation or warranty in respect of the property.